

フォー・シーズンズ

<Four Seasons>

作曲：塚山エリコ
編曲：Pleasant Music

16BEAT

♩ = 65

M1

A

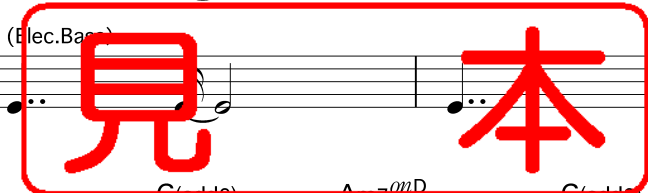
G(add9)
(A.Guitar)

D^{on}G

Dm7^{on}G

CM7

Bm7 Am7



*MDR<PLAY>ON

Am7^{on}D

G(add9)

Am7^{on}D

G(add9)

D^{on}G

Dm7^{on}G

CM7

Bm7 Am7

Am7^{on}D

G(add9)

Am7^{on}D

D7⁽⁹⁾

*FDを使用する場合にこの作業を行って下さい

(M1)

Musical score for the first system. It features a treble and bass clef with a key signature of one sharp (F#). The melody is in the treble clef, and the accompaniment is in the bass clef. Chords are indicated above the staff: G(add9), D^{on}G, Dm7^{on}G, CM7, Bm7 Am7, and Am7^{on}D.

Musical score for the second system. It continues the melody and accompaniment from the first system. Chords are indicated above the staff: G(add9), D^{on}G, Dm7, CM7, and Bm7 Am7. A large red stamp with the Japanese characters "見本" (Mitsuben) is overlaid on the middle of the system.

Musical score for the third system. It includes a section marked with a box containing "M2" and "M3". The melody is in the treble clef, and the accompaniment is in the bass clef. Chords are indicated above the staff: Am7^{on}D, G(add9), Dm7 (Pan Flute), and G7⁽⁹⁾. A box containing "B" is also present. The accompaniment includes a section marked "8 (Strings)".

Musical score for the fourth system. It continues the melody and accompaniment. Chords are indicated above the staff: CM7, Em7, A7⁽⁹⁾, Am7, and D7⁽⁹⁾.